

NZLC AUCKLAND

STUDENT ACCOMODATION Options 2020



NZLC Auckland is located in the heart of the city, with easy access to public transport. There are a variety of accommodation options to choose from, including:

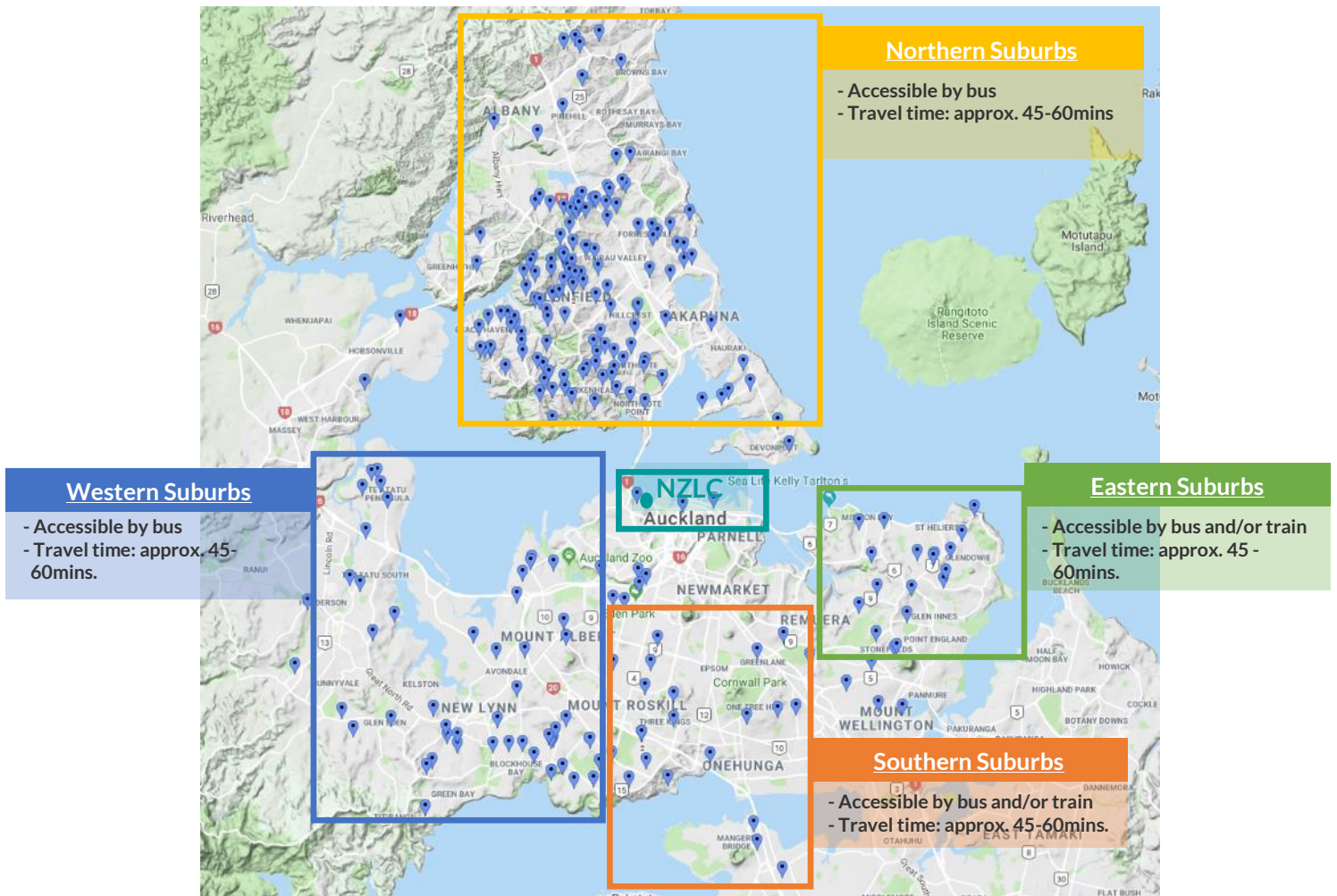
- ✓ Homestay
- ✓ City Accommodation (18 years +)
- ✓ Flatting (18 years +)

	Homestay	City Accommodation	Flatting
Cost per week	Half Board: \$290 (18 years +) Half Board: \$320 (13-17 years) Full Board: \$350 (13-17 years)	From \$236/w	\$170 - \$500/w
Minimum stay	1 week	1 night - 2 weeks	Depends on flat (usually 3 - 6 months)
Located in the city centre?	No	Yes	Depends on flat
Power included?	Yes	Yes	No (normally additional shared cost)
Internet included?	Yes	Yes (fees may apply)	No (normally additional shared cost)
Food included?	Half Board: Breakfast and dinner every day + lunch on weekends	No	No
Furnished?	Yes	Yes	Depends on flat

HOMESTAY

Staying with a friendly and caring homestay family is one of the best ways to experience the Kiwi culture, and at the same time practise English outside the classroom. Our homestay families are very carefully selected and regularly inspected by our NZLC Accommodation Department.

Homestays are generally located 45 - 60 minutes travel distance by public transport. The map below shows the distribution of our homestays (shown in blue markers) in the Auckland city region:



It is very important for us and the homestay family to know if you have any special requests or needs, so we can make your stay as comfortable as possible. **Please specify your requests on the NZLC Enrolment Form.**



CITY ACCOMMODATION

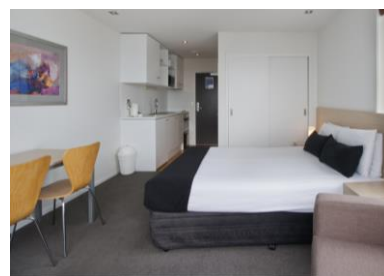
In addition to NZLC's homestay option, NZLC Auckland offers an accommodation arrangement service (\$250) where students who are 18 years or older can choose to be placed in one of our City Accommodation options below. This option is ideal for students who want to live independently and in a convenient downtown location.

Luxury Option 1 – Auckland Harbour Oaks

Auckland Harbour Oaks is the tallest apartment tower in New Zealand with 150 available rooms boasting the best harbour and city views in Auckland. Centrally located on the corner of Gore Street and only a 5-minute walk from NZLC, this modern complex contains 37 levels consisting of deluxe queen, 1 and 2 bedroom apartments. Auckland Harbour Oaks is a 4.5-star serviced apartment with full kitchen and laundry facilities along with free Wi-Fi.

Rates per room:

		Capacity	Rate per night
Studio	1 Queen Bed	1 - 2	\$160
One Bedroom City View	1 Queen Bed	1 - 2	\$170
	1 Queen Bed + 1 Rollaway Bed*	1 - 3	\$214
Two Bedroom Harbour View	1 Queen Bed + 1 Single Bed	1 - 3	\$190
	1 Queen Bed + 1 Single Bed + 1 Rollaway Bed*	1 - 4	\$234
Two Bedroom City View	2 Queen Beds	1 - 4	\$190
	2 Queen Beds + 1 Rollaway Bed*	1 - 5	\$234



*Subject to availability

Room Facilities:

- Kitchen includes oven, stove, microwave, kettle, fridge, dishwasher
- Balcony and double-glazed windows
- 1GB of complimentary internet per day
- Washing machine & dryer, iron and ironing board
- Desk with chair
- Bathroom with shower, hair dryer & towels
- LCD TV with SKY channels
- Direct dial telephone

Other Information:

Bond	\$250 at check-in. Photo ID and credit card required.
Check-in/Check-out	Check-in 2pm, check-out 10am
Cleaning	Daily service for 1-6 night stays. / Weekly service for 7+ nights
Additional Wi-Fi	3GB \$15 / 1GB \$10 (valid for 24 hrs.)
Cancellation	6 nights or less: 24 hours' notice. / 7+ nights: 7 days' notice. Cancellations made after this time: 1 night penalty fee applies.
Damage	Any damage caused by guests will be charged at the time of check-out
Final Cleaning	No cleaning charges
Reception hours	24/7. Check-in 2pm. Check-out 10am.
Black Out dates	These prices do not apply during blackout dates.

- All information is valid from 1 January – 30 September 2020. Please note that, as this information concerns external parties to NZLC Auckland, prices and conditions may change without notice.
- Auckland Harbour Oaks reserves the right to change the rate if the length of stay falls into a different rate category.
- All bookings are subject to availability.
- Above rates include water, power and GST

Budget Option – YMCA Hostel Apartments

YMCA Hostel is a good option if you are looking for an affordable place where you can meet a lot of people while having the privacy of your own room in clean and comfortable facilities. Relax in the dining room, lounge and courtyard while enjoying a snack, hot drink, internet access and a game of pool or two! It is a 15 minute walk from NZLC Auckland and also very easy access to Queen Street, Ponsonby, cafés and restaurants.

Rates per room: (Minimum Stay: 1 night)

	Capacity	Less than 1 week stay: 1-6 nights	1 week +
Single Room	1	\$67 per night	\$348 / week (\$50/night)

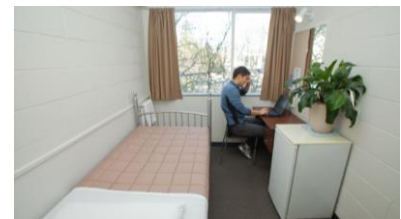


Each room contains:

- A study desk and chair
- Full set of linen and duvet
- A wardrobe, heater and bar fridge
- A single bed

Building Facilities:

- Wireless Internet / Fax and photocopying
- Shared laundry and kitchenettes (cooking utensils not provided)
- Dining Room / Outdoor seating area
- Television recreation room with SKY television / mini library
- Pool, Ping Pong and Foosball tables available at no extra cost
- Ongoing social activities and a selection of games and books for guest use
- Communal bathrooms and showers
- Within the same building you will also find a health and fitness club, stadium, and group fitness classes. Enquire at reception for more information.



Other Information:

Security Deposit	\$50 cash bond or valid credit card required for a stay of up to 4 weeks. \$140 refundable bond required for a stay of 4 weeks or more. Any damage made to YMCA Auckland Hostel will be charged to students directly.
Housekeeping	Housekeeping is provided weekly. Extra room service cleaning can be provided on request at the cost of \$25 each time. Payment needs to be made to YMCA directly by students.
Cancellation	Students leaving prior to 1 week (minimum stay) are not entitled to a refund. 7 days' notice is required for early departures after 1 week stay.
Other Fees	Wireless available from \$6 (unlimited/24 hours), \$20 (unlimited/7 days), \$50 (20GB/31 days). Washing tokens available at \$4 each and laundry powder \$1 each. Casual entry to the fitness centre is \$10 per day, membership available from the reception.
Reception hours	24/7. Check-in after 1pm. Check-out 10am. If you plan to arrive after hours you must inform us on making your booking.
Black Out dates	YMCA reserves the right to have blackout dates with alternate pricing. These will be advised at time of booking.

- All information is valid from 1 January 2020 - 31 December 2020. Please note: as this information concerns external parties to NZLC Auckland, prices and conditions may change without notice.
- All bookings are subject to availability.
- Above rates include water, power, weekly housekeeping and GST.

Budget Option – YWCA Auckland Hostel

YWCA Auckland Hostel is a 15 minute walk from NZLC Auckland, located in the centre of Auckland City, close to shops and entertainment venues. 75% of residents are international students and 80% of residents are aged 21 - 39. This budget hostel is a quiet and safe option if you are looking to have the privacy of your own room.

Rates per room: (Minimum Stay: 1 night)

	Capacity	Less than 1 week stay (1 - 6 nights)	1 - 8 weeks	8 Weeks +
Single	1	\$77	\$349/week (\$50/night)	\$236/week (\$35/night)
North Tower	1	\$80.50	\$370/week (\$53/night)	\$251/week (\$36/night)
6th Floor	1	\$82	\$375/week (\$54/night)	\$255/week (\$37/night)
Single Deluxe	1	\$86	\$395/week (\$57/night)	\$264/week (\$38/night)
Double	1-2	\$92.50	\$421/week (\$60/night)	\$358/week (\$47/night)



Facilities:

- Ground floor - kitchen, TV room/study room/lounge, and court yard.
- Each floor has a communal bathroom and shared laundry.
- No alcohol policy. CCTV coverage 24 hours a day.
- 6th floor has a separate kitchen, bathrooms and showers for 6th floor residents only.
- Levels 1, 2 and 6 - mixed gender floors.
- Levels 3, 4 and 5 - female only floors (males are only allowed during visiting hours (8am to 11pm) and must report to reception).
- Each room has a wardrobe, study desk, set of drawers, mini fridge, heating. Sheets, pillowcases, and duvets will be provided.
- Cooking utensils, plates and cutlery available to rent from reception for short term stays only (less than 1 week). Long term stays will need to provide their own items.

Other information:

Security Deposit	\$60 key deposit (\$120 for 6 th floor) at the time of check-in. Any damage made to YWCA will be charged to students directly.
Housekeeping	Vacuum cleaners and cleaning products are available from reception. Linen change: Every Wednesday at reception from 7am – 9am and 6am – 10pm for stays 1 week or longer, white linen only. Clean your room and fridge before check-out.
Cancellation	48 hours' notice must be given for cancellations. Amendment of bookings are permitted providing at least 2 weeks' notice is given. YWCA reserves the right to change the rate if the length of stay falls into a different rate category.
Other Fees	Laundry \$3/cycle. Internet: 1 day/500MB \$5. 7 days/2GB \$12. 30 days/10GB \$30. 30 days/51GB \$62. 31 days/100GB \$89.
Reception hours	8am – 10pm. Check-in 1pm. Check-out 10am. If you plan to arrive after hours, you must inform us on making your booking.
Black Out dates	YWCA reserves the right to have blackout dates with alternate pricing. These will be advised at time of booking.

- All information is valid from 1 January 2020 - 31 December 2020. Please note: as this information concerns external parties to NZLC Auckland, prices and conditions may change without notice.
- All bookings are subject to availability. If a booking is extended in to a new price category the new rate will only apply from date of confirmation of extension.
- Above rates include water, power and GST.

Budget Option – Zest Auckland Hostel

Zest Auckland Hostel is a great option if you are looking for secure and safe accommodation with the privacy of your own room and a fun living experience. Zest is a 15 minute bus ride from NZLC Auckland, located in the centre of Grafton, close to the Auckland Domain, shops and cafes. Clean affordable rooms for the budget conscious traveller as well as a great place for relaxing and unwinding.

Rates per room: (Minimum Stay: 1 night)

	Capacity	Less than 1 week stay: 1-6 nights	1 week +
Single Room	1	\$60 per night	\$290/week (\$42/night)



Facilities:

- Ground floor – communal kitchen with large shared fridge, TV, couches, pool table, ping pong table, BBQ area outside with picnic table and bean bags. Reception is open 24/7.
- Each floor has 30 bedrooms with unisex bathroom and shower cubicles, shared kitchen, extra kitchenette, shared lounge with TV and shared washing machine/dryers.
- Each bedroom has a wardrobe, study desk with drawers, mini fridge and heater. Students need to provide their own sheets, blankets, pillows and towels. Alternatively these can be purchased from reception for an extra cost.
- Some cooking utensils and cutlery are provided in the shared kitchens.



Other information:

Security Deposit	No security deposit is required. Any damage made to Zest will be charged to students directly.
Housekeeping	Students are responsible for cleaning their own rooms and washing their own linen. Vacuum cleaners and cleaning cloths can be borrowed from reception when available. Cleaning liquids may be used for an extra fee. Students must clean their room and fridge before check-out.
Cancellation	For bookings of less than 7 days, 48 hours' notice is required. For bookings of 7 days or more, one week's notice is required. Zest reserves the right to change the rate if the length of stay falls into a different rate category.
Other Fees	Laundry \$2/cycle. Internet: \$15 per week for unlimited. Bedding packs are available to purchase from reception: \$50 for sheets, pillow and blanket. \$60 for sheets, pillow, blanket and towel.
Reception hours	24/7. Check-in is 2pm. Check-out 10am. If you plan to arrive after hours, you must inform us on making your booking.
Black Out dates	Zest reserves the right to have blackout dates with alternate pricing. These will be advised at time of booking.

- All information is valid from 1 January 2020 - 31 December 2020. Please note: as this information concerns external parties to NZLC Auckland, prices and conditions may change without notice.
- All bookings are subject to availability. If a booking is extended into a new price category the new rate will only apply from date of confirmation of extension.
- Above rates include water, power and GST.

FLATTING

You can rent a room in a house called a 'flat' that you share with other people. This is called 'flattening', and it is very common in New Zealand. This is a good option if you want to have freedom, yet live with a group of people. Living with people from other countries is a good way to practise your English and make new friends.

The cost of flattening will vary depending on the distance from the city centre, the number of people sharing, and the size and quality of the rooms. We advise students to organise a flat viewing to check the flat conditions. You can expect to pay anywhere between \$160 and \$350 per week for your room in the flat plus moving in costs, such as a bond and letting fee. You will also need to pay for expenses such as power, heating, internet and cleaning supplies.

This option is suitable for students who are planning to stay in the flat for a longer period (6 months or more). If you decide to go flattening, you can find a group of people you would like to live with and then go looking for a flat that will suit your group, or you can look for an existing flat that has a room available.

The table below is a sample budget based on an individual sharing with two other flatmates in a 3-bedroom flat:

Expenses	Cost per person per week
Rent	\$235
Power	\$15
Internet	\$10
Food	\$80
Shared household products (cleaning supplies, etc.)	\$5
Total	\$345

If you decide that flattening is the best option for you, it is a good idea to book either homestay accommodation or city accommodation for the first 2 - 4 weeks of your stay in New Zealand. This will allow you time to search and secure a suitable place.

Popular Facebook groups or websites to search for flats include:

- [Flatmates wanted – Auckland](#) (Facebook)
- [Flatmates Wanted in Auckland](#) (Facebook)
- www.trademe.co.nz/flatmates-wanted
- www.ekproperty.co.nz
- www.nzflatmates.co.nz
- www.easyroommate.co.nz

