



I|S|E|
 THE INTERNATIONAL
 SCHOOL OF ENGLISH
 IRELAND



SUMMER PROMOTION 2018

General English

15 hours per week



2 weeks	4 weeks	6 weeks
€260 Now!	€480 Now!	€700 Now!
€240	€460	€680
Additional per week €110		

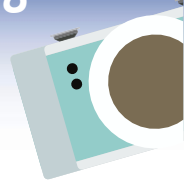


Offers ends 30/06/2018

Accommodation
Shared Room
 from **€165** per week.

Internship
Placement Fee
€400

- Only for EU students • Minimum age: 18
- Class timetable varies according to availability and levels
 9:00 to 12:15 / 13:45 to 17:00
- Registration Fee €70 (not included)
- ISE 26 Harcourt Street or ISE 106 Capel Street (subject to availability)



Please note: All services are subject to availability. Accommodation can only be confirmed under enrollment and a deposit. *Terms and conditions apply to all quotes.

0543 7494412

info@edurota.com

www.edurota.com





I|S|E
THE INTERNATIONAL
SCHOOL OF ENGLISH
IRELAND



Access to Monthly
Job club
& Learner
Protection
Free of charge

General English course

25 weeks study + 8 weeks holidays

Morning

15Hours

€2800

20Hours

€3200

Afternoon

15Hours

€2400

20Hours

€3200

Extrafees

Medical insurance	Exam fee (ISE I)	Work placement (Paid / unpaid)	Registration Fee	Accommodation Booking Fee	Airport Pickup
€150	€130	€400	€70	€60	€70

Offers End 30/06/2018



ISE

THE INTERNATIONAL
SCHOOL OF ENGLISH
IRELAND

Short term	General English 15 hours per week	Semi-Intensive General English 20 hours per week	Intensive General English 30 hours per week	Exam Preparation (Trinity/IELTS/Cambridge) 15 hours per week
Number of weeks	09:00 -12:15 or 13:45 -17:00	09:00 -13:30 or 12:30 -17:00	09:00 -12:15 & 13:45 - 17:00	09:00 -12:15 or 13:45 -17:00
01	€150	€210	€250	€180
02	€260	€340	€470	€320
03	€370	€470	€690	€460
04	€480	€600	€910	€600
05	€590	€730	€1130	€790
06	€700	€860	€1350	€880
07	€810	€990	€1570	€1020
08	€920	€1120	€1790	€1160
09	€1030	€1250	€2010	€1300
10	€1140	€1380	€2230	€1440
11	€1250	€1510	€2450	€1580
12	€1360	€1640	€2670	€1720

University Pathway Programme

8 Months - 20 Hours per week

Tuition Fee **€6000**

Exam + Registration fee **€350**

Please note: all services are subject to availability. Accommodation can only be confirmed under enrollment and a deposit.
*ISE 26 Harcourt Street or ISE 106 Capel Street (subject to availability) *Terms and conditions apply to all quotes.

